

The Offwell Mission Community

St Mary's, Offwell, - St Cuthbert's, Widworthy, - St Michael and All Angels, Farway

THE LINK

AUGUST SEPTEMBER EDITION 2023

The Three Shelters

A man who had been stranded on a deserted island for two years was at last found. The media accompanied the rescue team, and when they arrived they saw that the man had built three huts. When asked what the huts represented, the man explained.

"Well, this hut is my home. And that hut over there is where I go to church."

The reporters seemed moved by the revelation that he had a place of worship. But then one asked, "What is that hut over there?"

"That's the church I don't go to!"

Life is full of preferences. Like the simple pleasure of choosing your favourite ice cream. Rum and Raisin for me thanks!

Desserts aside, our own partialities can be deeply-rooted. Our environment has its way of honing a 'comfortable place' for us, so we feel a sense of 'being home' and experiencing peace. And as a result, we tend to look for reminders of 'home' as we journey through life; subconsciously searching for familiarity and safety.

This month Ruth and I celebrate one year since our move to East Devon. Settling-in takes time, and getting to know people and places, can take years. But with each day, the churches, the parishes and our communities feel more like home to us. I am often reminded of this when I find myself being part of the welcome, rather than being welcomed. A thought:

Where is your 'home'? For me, home is the place I return to. Sometimes, that is when I return to prayer or worship. At other times it is a physical place where I find rest and peace. It is summed up beautifully in St Augustine's prayer. "You have made us for yourself, O Lord, and our heart is restless until it finds rest in you." I suppose I'm saying home is where I experience the presence of God

Anyway, back to the three huts: home, the Church I attend, and that third place, the Church I don't attend. I think Jesus spent much of his time in the third hut, the place where others chose not to go. Where is that third place for you? Where have you not ventured? It might not be a place, it might instead be a thought or an idea. It could be faith, religion or church. It could also be time spent with an old friend, a neighbour, or even someone that you don't get on with. I encourage you to go to that place. See what you find, you never know you might find home is there too.

Reverend Jeremy Putnam

CHURCH SERVICES

DATES	ST MARY'S OFFWELL	ST MICHAEL AND ALL ANGELS FARWAY	ST CUTHBERT'S WIDWORTHY
Sun. 6 th Aug. Transfiguration	9:30am Holy Communion		9:30am Moring Prayer
Sun. 13 th Aug. Trinity 10	5pm BCP Evensong	11:15am Holy Communion	9:30am Holy Communion
Sun. 20 th Aug. Trinity 11	10:30am Family Communion		9:30am Family Service
Sun. 27 th Aug. Trinity 12	10:30am Family Service		9:30am Family Service
Sun. 3 rd Sept. Trinity 13	9:30am Back To School Service		9:30am Holy Communion
Sun. 10 th Sept. Trinity 14	5pm BCP Evensong	11:15am Holy Communion	9:30am Holy Communion
Sun. 17 th Sept. Trinity 15	10:30am Family Service		9:30am Family Service
Sun. 24 rd Sept. Trinity 16	10:30am BCP Holy Communion		9:30am Family Service
Sun. 1 st Oct. Harvest	9:30am Parish Communion		3pm Harvest Celebration

FARWAY METHODIST CHURCH SERVICES

AUGUST

- 6th 11am Conducted by Mrs Margaret Cole
 13th 3pm Conducted by Revd. B Hadfield.
 20th 11am Conducted by Mrs P Murphy
 27th 3pm Conducted by Revd. Ben Haslam H.C.

SEPTEMBER

- 3rd 11am Conducted by Revd. D. Stephen Mosedale
 10th 3pm Conducted by Revd. Steve Santry
 17th 11am Local Arrangement
 24th 3pm Conducted by Revd. Ben Haslam H.C.





BIBLE READINGS



DATES	HEBREW BIBLE	NEW TESTAMENT EPISTLE	THE GOSPEL
Sun. 6 th Aug. Transfiguration	Daniel 7.9,10,13,14	2 Peter 1.16–19	Luke 9.28–36
Sun. 13 th Aug. Trinity 10	1 Kings 19:9-18 & Isaiah 2:1-4 & 12-22	Romans 10.5–15	Matthew 14.22–33
Sun. 20 th Aug. Trinity 11	Isaiah 56.1,6–8	Romans 11. 1–2a,29–32	Matthew 15. [10–20]21–28
Sun. 27 th Aug. Trinity 12	Isaiah 51.1–6	Romans 12.1–8	Matthew 16.13–20
Sun. 3 rd Sept. Trinity 13	Jeremiah 15.15–21	Romans 12.9–21	Matthew 16.21–28
Sun. 10 th Sept. Trinity 14	Ezekiel 33.7–11	Romans 13.8–14	Matthew 18.15–20
Sun. 17 th Sept. Trinity 15	Genesis 50.15–21	Romans 14.1–12	Matthew 18.21–35
Sun. 24 rd Sept. Trinity 16	Jonah 3.10 – 4.11	Philippians 1.21–30	Matthew 20.1–16
Sun. 1 st Oct. Harvest	Joel 2:21-28		Matthew 13:1-9



BACK TO SCHOOL SUNDAY at ST MARY'S CHURCH OFFWELL 9.30am on 3rd SEPTEMBER

This is a great church event for all the family. The service will start at 9.30am with pastries, coffee and juices.

If you are starting school for the first time, or just returning to school from your summer break then come and join us at St Mary's Church, Offwell. It'll be a lot of fun, with our worship tailored around a familiar school Collective worship format. So come and join the celebrations at the start of a new school year.'

We understand that the beginning of a new school year can be an emotional time for both children and parents. It can be an exciting time, but it can also feel rather scary too, especially if you are moving up to big school, or starting a new school entirely. In this service we celebrate the excitement of making new friends and learning new things, but we also ask God to be with those who are feeling anxious about starting school again.

RECTORY MEETING

3RD AUGUST 7PM

OFFWELL RECTORY EX14 9SB

It doesn't matter if you've been attending church for 50 years or have just popped in for five minutes everyone is welcome to voice their hopes and wishes for the future of our three parish churches.

In our next meeting. Revd Jeremy will share some of the feedback from the community and church surveys that were conducted earlier in the year. (20mins)

We'll discuss any conclusions we might draw from them, and then maybe think about what priorities/ideas they might point toward. (20mins)

We'll read the first chapter of Nehemiah and pray together to draw the meeting to a close the end. (20mins).

OPEN DAY AT ST. MARY'S

DEVON HISTORIC CHURCHES DAY - Saturday 2nd September

St. Mary's, Offwell will be open from **10:30am** for refreshments.

For fantastic views of Offwell and beyond; the tower will be open to visitors (in return for a small donation) and we hope to offer a chance to ring the bells.



COFFEE MORNING

Every 3rd Thursday of the month we hold a coffee morning in the Offwell Sports & Social Club room for all three of our Benefice Parishes.



Everyone is welcome, whether you go to church or not, you will be made very welcome.

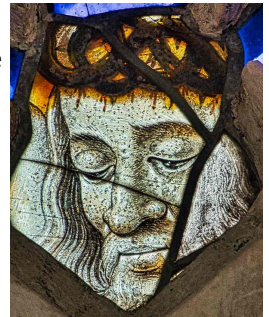
Offwell School's Oak Class make their own medieval stained glass



Following their success with King Charles III Coronation display Oak Class at Offwell School turned their attention this summer to learning about the history of medieval church stained glass windows by producing their own facsimilies. They were inspired by the medieval window in the south wall of the Chancel at St. Mary's which contains fragments of ancient stained glass likely to date from the 14th century.

The church of the medieval world was full of colour and reflective light. Between the 12th and early 16th centuries a vast amount of stained glass was produced for churches. The bright, jewel like colours depicted images relating to Christian doctrine for both the clergy and laity to 'read' and make their own spiritual connection. In our modern society we are so used to reading words. In the medieval world, where only the privileged few were literate, as we understand it, the majority were educated in the literacy of images. The figures, colours, designs, scenes, symbols, and spiritual truths contained within stained glass were meaningful in a way that is remote to current society.

The term 'stained glass' is a general term and includes the artistic skill of medieval artists painting on glass, as can be seen in the fragment of glass, representing the head of Christ with thorns, at the very apex of the east window of the North Aisle at St. Mary's. Offwell School's recently acquired powerful new camera enabled the children to see in close up, for the very first time, a stunning example of the emotional talent of medieval glass painters.



Drawing the leading



Painting

The stained glass exhibition can be viewed in St. Mary's during the summer.

DIARY DATES

WEDNESDAYS	FARWAY VH	COFFEE MORNING 10am to 12 (every Wednesday)
FRIDAY	FARWAY VH	BAR OPEN 7.30pm (every Friday)
WED. 9th AUG.	OFFWELL	OFFWELL LADIES LUNCH CLUB - CREAM TEA (husbands & friends welcome) Contact Marian for more details on 01404 831066 or tuckers@offwell.com
Sat. 12th AUG.	FARWAY VH	FAMILY FUN DAY 2pm till late - BBQ & Live music
THURS. 17th AUG.	OFFWELL GOLF CLUB	MEN'S BREAKFAST Friends & neighbours welcome . Arrive 9:30am for 10am. Contact 01404 831924 for more details
THURS. 17th AUG.	OFFWELL SSC	BENEFICE COFFEE MORNING 10:30am - 12 noon
SAT. 20th AUG.	OFFWELL CAR PARK	HONITON WINE BAR PIZZA MAN 6-8pm (every 3 rd Saturday)
TUES. 22nd AUG.	FARWAY VH	CAR WASH plus coffee and cake * to help Izzy get to Tanzania
SAT. 2nd SEPT.	OFFWELL	St. Mary's Church OPEN DAY from 10:30am
SAT. 2nd SEPT.	OFFWELL VH	FLOWER & PRODUCE SHOW 2pm
TUES. 5th SEPT.	FARWAY VH	GENTLE YOGA 11am - 12 midday (every Tuesday)
WED. 6th SEPT.	Offwell & Farway	CHILDREN START BACK TO SCHOOL
FRI. 8th SEPT.	FARWAY VH	'BACK TO SKOOL' THEMED QUIZ * to help Izzy get to Tanzania
WED. 13th SEPT	OFFWELL	OFFWELL LADIES LUNCH CLUB
SAT. 17th SEPT	OFFWELL CP	HONITON WINE BAR PIZZA MAN 6-8pm
THURS. 21ST SEPT.	GOLF CLUB	MEN'S BREAKFAST
THURS. 21ST SEPT.	OFFWELL SSC	BENEFICE COFFEE MORNING 10:30am - 12 noon
SAT. 23rd SEPT.	FARWAY VH	HARVEST FESTIVAL BARN DANCE + FOOD (ticketed)

INTRODUCING

Revd Jeremy has asked me to write a short introduction piece for your magazine, so I spent some time pondering what exactly you might want to know about me. I decided on, who I am, what I am passionate about, and what I get up to when I have some free time.



Edward and I have been married for 32 years and we have four children. Neither of us have ever lived more than 5 miles from the town of Axminster. We have two sets of twins, Holly and Catherine are 29 years old and Jo and Mark are 27 years old. Yes, I had four children under two years old at one point. Despite being hard work, we would have not had it any other way. We have always said they are a gift from God, who we nurtured into the world, until they were ready to venture into their own worlds. We love it when we spend time together as a family, which now includes one son-in-law and two fabulous grandchildren, Corey who is 4 and Emmie-Grace who is 1½. Being an ‘Amma’ has bought new joy into my life.

I am passionate about two things, both define, in part, who I am. The first is being pure Devonian, and the other is being a Priest, and they are intertwined. This means that ‘belonging’ is hugely important to me. Whether it’s rural life or church, finding new ways to connect the two, and taking risks for God, well discerned ones anyway, to enable God to be found by others in new ways – I like looking for what connects us.

When I have free time, I am a prolific reader and always have my head in a book, it’s what restores me for all I do.

I look forward to joining you all for a new season on my ministry.

Revd Tracey Voysey

SAVE THE DATE

FRI 6th Oct.	OFFWELL VH	HARVEST SUPPER
SAT. 14th Oct.	OFFWELL VH	BARN DANCE
TUES. Oct. 31st @ 5:30pm	OFFWELL, St. Mary’s Lychgate	HALLOWEEN LIGHT & FIRE PIT EVENT
NOVEMBER	OFFWELL VH	QUIZ - date & time tbc
DECEMBER	OFFWELL	SCHOOL PTFA - CHRISTMAS FAYRE - tbc
DECEMBER	OFFWELL	SCHOOL PTFA - WREATH MAKING - tbc
DECEMBER	OFFWELL VILLAGE	CAROL SINGING - date & time tbc
THURS. 25th JAN. 24	OFFWELL VH	BURNS SUPPER

FIND US - CONTACT



Revd. Jeremy Putnam

Phone: 01404 831911

Email: jeremyputnam@parish-church.com

Typical Working Pattern is Mon - Thurs (Exeter)

Fri & Sun (Offwell, Widworthy & Farway)

Revd. Tracey Voysey

Phone: 07968 658 638

Email: revdtracey@gmail.com

Revd. Tracey will be working for the parish one day a week and one Sunday a month



Benefice Churchwardens

FARWAY

Tara Huffman - 01404 871372

Stephanie Kastner

OFFWELL

Jonathan Paveley - 01404 831450

David Pavey - 01404 43029

WIDWORTHY

Mim Prins - 01404 831688

Vacancy

Offwell Mission Website

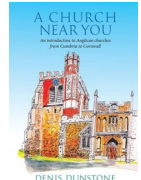
www.parish-church.com

www.offwell.church

www.farway.church

www.widworthy.church

Do visit our website where there will be new articles to read (and more) - the latest of which is a book review by Carol Hayes of 'A Church Near You'.



Sign up to the monthly newsletter to receive copies of 'The Link' by email.

Facebook Pages



[The Offwell Mission Community](#)

[The Offwell Sports And Social Club](#)

[Offwell Together](#)

[Spotted Wilmington, Devon, UK](#)

[Farway village hall East Devon](#)

Websites:

www.achurchnearyou.com

www.explorechurches.org

www.farwaydevon.org.uk

www.farway.devon.sch.uk

www.offwell.org

www.offwell-primary.devon.sch.uk



Email Addresses:

The Link magazine/newsheet: parisheslink@gmail.com

Offwell Website (for updates): offwell.org@gmail.com

Farway Village Hall: farwayvillagehall@gmail.com

A colour copy of The Link is available on the 'Offwell Mission' & 'Ofwell.org' websites